




LONG RANGE PLANNING STUDY

PORT JEFFERSON

UNION FREE SCHOOL DISTRICT

2021 – 22
UPDATE

*A Service of Western Suffolk BOCES
Division of Instructional Support Services
Office of School Planning & Research*



Port Jefferson Union Free School District

Long Range Planning Study Update

Demographic and Enrollment Analysis

2021-22

BOARD OF EDUCATION

PresidentEllen Boehm
Vice President.....Tracy Zamek
TrusteesRandi DeWitt
.....David Keegan
.....Dr. Ravi Singh
.....Rene Tidwell
.....Ryan Walker

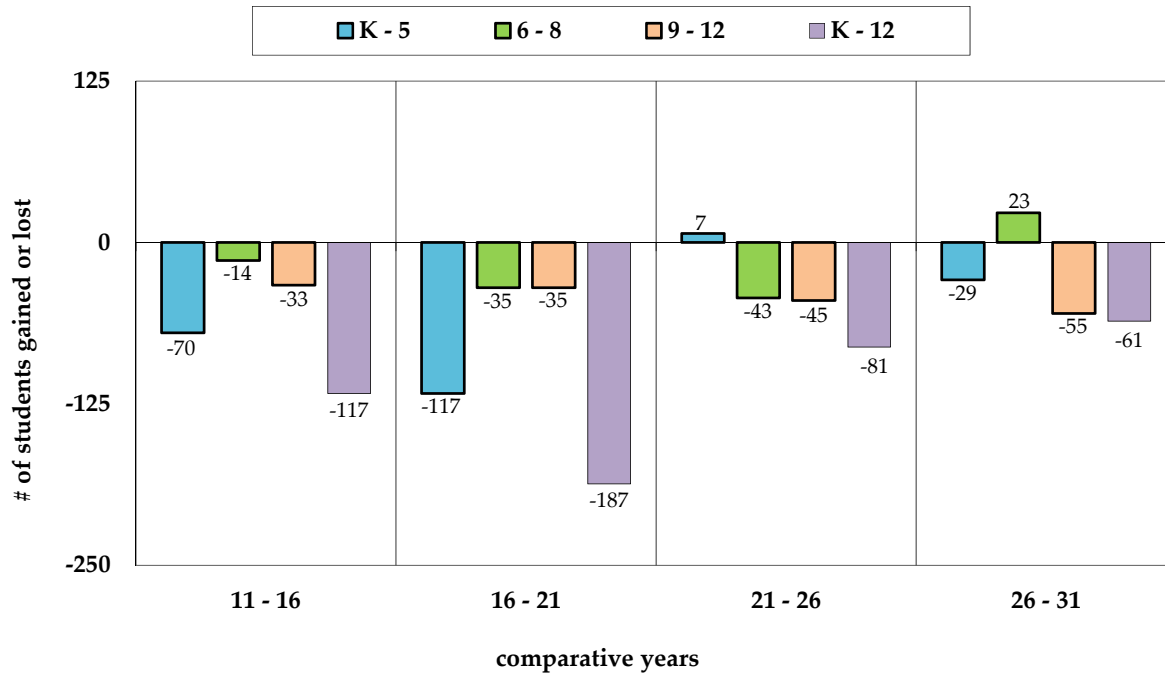
DISTRICT ADMINISTRATION

Superintendent of Schools.....Jessica Schmettan
Deputy SuperintendentSean Leister
Assistant Superintendent for Curriculum & Instruction Dr. Robert Neidig
Executive Director of Human Resources.....Isha Morgenstern
Director of Special Education.....Dr. Jodi Cahill
Director of Music and Fine Arts Dr. Michael Caravello
Director of Health, Physical Education, Athletics & Nursing Adam Sherrard
Director of Facilities & Transportation Fred Koelbel

BUILDING ADMINISTRATION

Edna Louise Spear Elementary SchoolAmy Laverty, Principal
.....Brian Walker, Assistant Principal
Port Jefferson Middle School.....James Nolan, Interim Principal
.....Brian Walker, Assistant Principal
Earl L. Vandermeulen High School.....Eric Haruthunian, Principal
..... Kevin Bernier, Assistant Principal

Port Jefferson Union Free School District Enrollment Change 2011 - 2031



The Port Jefferson Union Free School District recorded a loss of 304 students, or 25.1 percent between 2011 and 2021. During the historical period, enrollment decreased in all grade configurations. During the first half of the projection period, the elementary (K - 5) grades will see a small gain, while the middle (6 - 8) and high school (9 - 12) grades are expected to continue losing students. During the latter half of the projection period, losses are expected in the elementary and high school grade configurations, while the middle (6 - 8) grades are expected to gain students. The projected 2031 enrollment of 766 students represents an overall loss of 142 students, or 15.6 percent, when compared to the current enrollment.

INTRODUCTION

At the request of the Port Jefferson Union Free School District, the *Western Suffolk BOCES Office of School Planning and Research* conducted this study to evaluate recent demographic influences and enrollment trends in order to prepare projections through the year 2031.

The Port Jefferson Union Free School District is dedicated to meeting the educational needs of its students. The continued monitoring of enrollment trends will give the district the necessary data to consider a variety of educational issues. The foundation for this study is in keeping with the promotion of the basic district mission and philosophy.

The Board of Education and the Superintendent's efforts to plan for the future through sound management practices is fostered by comprehensive, objective data, such as contained within this Long Range Planning Study Update. This study serves to provide objective data that the Board of Education and administration can use in planning for the future. Planning is, however, a dynamic process that needs to reflect change. Periodic updates allow the incorporation of subtle changes in district trends. This study provides an update to the demographic and enrollment study prepared for the district during the 2016-2017 school year.

Barbara Graziano, School Planning Manager, oversaw all aspects of the study and served as principal researcher. Shu-ling Liu, Research Analyst, served as analyst and forecaster. Irene Bradley, Program Specialist, prepared the report. Denise Facilla, Educational Planning Assistant, provided research assistance and prepared the report for printing.

Jessica Schmettan, Superintendent of Schools, provided access to district records and acted as district liaison, thus enabling the study to accomplish its objectives.

Additionally, selected references and resources were used, as indicated below:

Brookings Institution
Center for Immigration Studies
Centers for Disease Control and Prevention
Joint Center for Housing Studies of Harvard University
Migration Policy Institute
National Alliance for Public Charter Schools
National Association of Realtors
National Catholic Educational Association
National Center for Education Statistics
National Center for Health Statistics, Division of Vital Statistics
National Home Education Research Institute
New York Charter Schools Association
New York State Association of Realtors
New York State Department of Health
New York State Education Department
New York State Office of Real Property Services
Newsday
One Key MLS
Pew Research Center
The Wall Street Journal
Town of Brookhaven Planning Department
United States Customs and Border Protection
United States Census Bureau
United States Department of Education
U.S. Department of Housing and Urban Development

TABLE OF CONTENTS

ENROLLMENT: PAST, PRESENT & FUTURE

A. Births	1
B. Population	4
C. Housing.....	10
D. Non-Public School Enrollment	14
E. Enrollment Projection Methodology.....	16
F. District Enrollment	18
G. Enrollment of Grade Configurations	20

APPENDICES

Appendix A - Historical and Projected Enrollment Worksheets

Appendix B - Enrollment Graphs

TABLES

Table 1 - Births in the Port Jefferson UFSD 2006 - 2019	3
Table 2 - Foreign-Born Population in the United States from 1970 to 2060	6
Table 3 - Number of Home Sales and Median Prices in Nassau and Suffolk Counties.....	10
Table 4 - Home Sales in the Port Jefferson UFSD 2009 - 2020.....	11
Table 5 - Approved and Proposed Housing in the Port Jefferson UFSD.....	12
Table 6 - Projected Port Jefferson UFSD Enrollment.....	18
Table 7 - Projected Port Jefferson UFSD Elementary Instructional Sections	21
Table 8 - Projected Port Jefferson UFSD Middle & High School Enrollment	23

FIGURES

Figure 1 - New York State Births, 2000 - 2020	2
Figure 2 - Nassau & Suffolk County Births, 2000 - 2020.....	2
Figure 3 - Projected Age Structure of the U.S. Population.....	5
Figure 4 - U.S. Children in Immigrant Families	7
Figure 5 - Historical & Projected Ethnic Structure of the U.S. Population.....	8
Figure 6 - Percentage of Young Adults Living with Parents 1960 - 2020.....	13
Figure 7 - Charter School Enrollment	15

ENROLLMENT: PAST, PRESENT & FUTURE

School enrollment decreases occur as a result of fewer children being born, fewer families moving into a community, and/or more children attending non-public schools. The Port Jefferson Union Free School District has experienced overall district K - 12 enrollment losses during the historical period. This enrollment decline is accounted for by declining births and changing resident characteristics.

A. BIRTHS

Data released by the *National Center for Health Statistics* shows that there were 3,613,647 births recorded in 2020; this is the lowest number of recorded births since 1979 and a decrease of 3.6 percent when compared to the previous year. In 2020, a decrease was also recorded in the general fertility rate at 56.0 births per 1,000 women between the ages of 15 and 44; this represents the lowest fertility rate on record and compares to the peak fertility rate of 122.7 births in 1957, during the Baby Boom years.

Since the *Great Recession* (2007 – 2009), lower births have been connected to several factors, including significant student loan debt and higher housing costs, which consequently led to many young individuals living with their parents longer than they may have otherwise. This has contributed to young adults delaying marriage and childbearing. Lower births have also been attributed to a noteworthy drop in teenage births. In 2020, the teen (15 - 19) birth rate of 15.3 per 1,000 women represents a decline of seventy-five percent when compared to the peak teen birth rate of 61.8 recorded in 1991.

The Brookings Institution reported in May 2021 that births are expected to further decrease as a result of the Covid-19 pandemic. The *Brookings* analysis estimates that a drop of 300,000 - 500,000 births is possible in 2021, as women opt to postpone or forego a pregnancy. This projection is based on an analysis of birth patterns during historical events, such as the *1918 Spanish Flu* and the *Great Recession*.

Another factor that has impacted birth rates has been a shift in fertility patterns amongst minority groups. Between 2000 and 2020, fertility rates have fallen for all racial/ethnic groups, with the most substantial decline reported in the Hispanic segment, which dropped from a peak of 98 births per 1,000 women in 2006 to 63 births in 2020. Birth rates for NHOPI (Native Hawaiian or other Pacific Islander) women were the highest with 73 births per 1,000 women, followed by Hispanic women (63 births), Blacks (59 births), Whites (53 births), AIAN (American Indian/Alaska Native) women (52 births) and Asian women (50 births).

Data from the *National Center for Health Statistics* shows that birth rates for all age groups (15 - 44) were lower in 2020, when compared to the previous year, with a significant decrease of eight percent recorded in the 15 - 19 age group.

Birth rates were highest for women aged 30 - 34 (94.8 per 1,000 women) in 2020, followed by women aged 25 - 29 (93.7) and women aged 20 - 24 (62.8); the birth rates in each of these age groups are lower than reported in the previous year. Notably, prior to 2016 women between the ages 25 - 29 had the highest birth rate.

Consistent with national birth trends, recent data indicates that the state of New York recorded a birth decline of 19 percent between 2000 (258,455 births) and 2020 (209,172 births). Between 2019 and 2020, births decreased 5.6 percent; this is the largest yearly decline of the 20-year historical period.

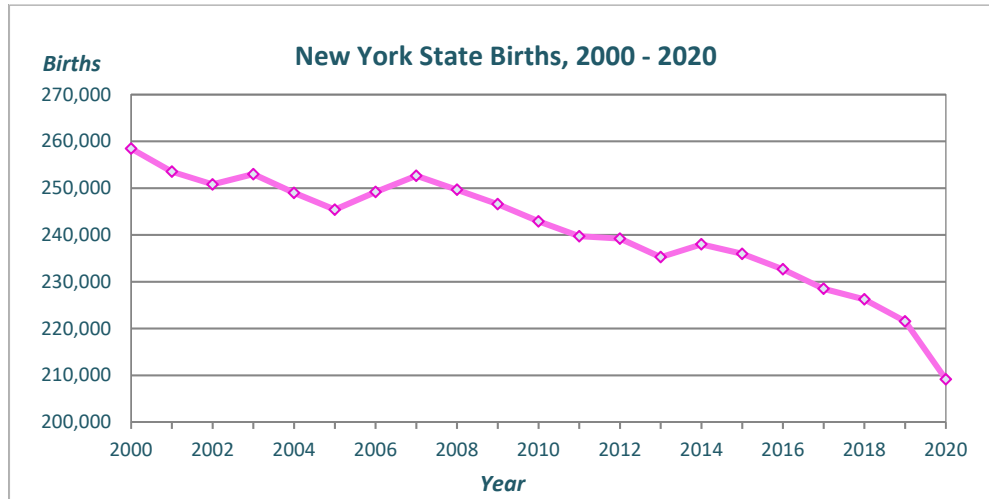


Figure 1 - New York State Births, 2000 - 2020

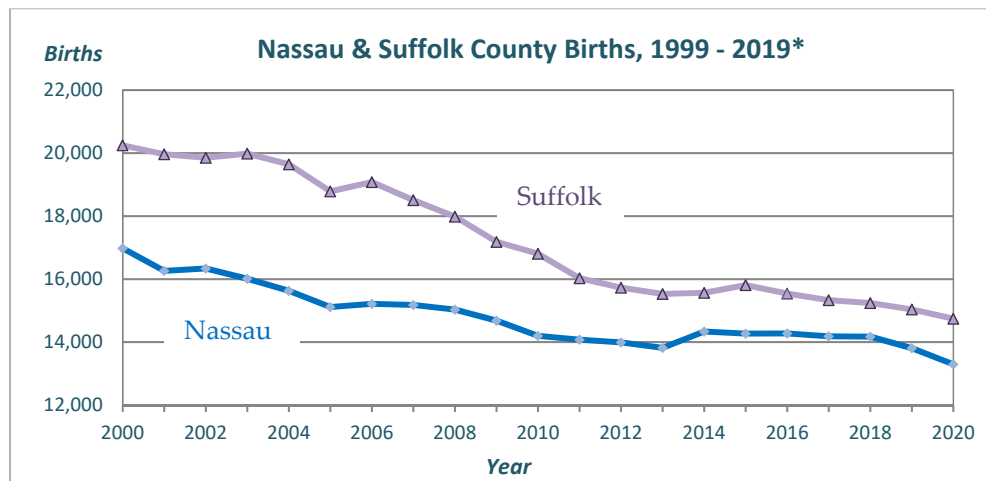


Figure 2 - Nassau & Suffolk County Births, 2000 - 2020
*2020 data is provisional

Figure 2 shows Nassau County recorded 16,979 births in 2000. Since then, births have declined more than 21 percent, with 13,294 births recorded in 2020; this is the lowest level of the historical period. Births in Suffolk County remained stable between 1999 and 2003. Since then, births have declined nearly 25 percent, with 14,742 births recorded in 2020; this is also the lowest level of the historical period (*county birth data for 2020 is provisional*).

As shown in Table 1, births in the Port Jefferson Union Free School District peaked from 2006 through 2009, with 50 - 61 births recorded in those years. However, beginning in 2010, births have been at a lower level, ranging within 29 - 52 each year through 2019 (2020 data is not yet available).

Table 1 - Births in the Port Jefferson UFSD 2006 - 2019

Year	Port Jefferson UFSD	Town of Brookhaven
2006	50	6,257
2007	61	6,024
2008	47	5,782
2009	58	5,452
2010	47	5,446
2011	44	5,088
2012	45	4,989
2013	47	4,868
2014	48	4,860
2015	29	4,899
2016	43	4,674
2017	39	4,543
2018	52	4,702
2019	50	4,589

Source: NYS Dept. of Health

Note: The NYS DOH has not yet issued birth data for 2020

B. POPULATION

According to *2020 Census* data, there were 331.5 million people living in the United States as of July 2020; this is an increase of 22.7 million people, or 7.4 percent, since the *2010 Census*. This represents the slowest growth for a decennial census since the great Depression in the 1930's. The growth rate has been impacted by lower fertility rates, lower immigration rates since the *Great Recession*, and increased mortalities among baby boomers. *Census Bureau* projections indicate that the United States population is expected to continue to grow more slowly, with an increase of 74.5 million people forecasted between 2020 and 2060. The population is expected to reach 404 million people by 2060.

New York State's population totaled approximately 20.2 million people as of July 2020, reflecting a gain of approximately 823,000 people (4.2 percent), when compared to the *2010 Census*. New York is the fourth most populous state in the country, following California (39.5 million people), Texas (29.1 million people) and Florida (21.5 million people). Prior to 2014, New York had been the third most populous state.

Nassau County's population totaled approximately 1.4 million people as of July 2020, reflecting a gain of more than 56,000 residents, or 4.2 percent, between 2010 and 2020; Suffolk County recorded a gain of approximately 32,600 residents, or 2.2 percent, during this period, with a population of more than 1.5 million people in July 2020. Nassau and Suffolk Counties rank sixth and fourth, respectively, in population among New York's 62 counties.

Between 2010 and 2020, the Town of Brookhaven recorded a loss of 267 residents. The population of the Port Jefferson School District remained stable (gain of 84 residents) during the same period, with approximately 7,654 residents living within the district in 2020.

According to *Census Bureau* projections the year 2030 will mark a “demographic turning point for the United States.” In that year, all baby boomers will be 65 years of age or over and one in five Americans will be of retirement age. It is also projected that by the year 2034, older adults will outnumber children under age 18 for the first time in history.

As shown in Figure 3, the segment of the population 65 years and over in the United States represented 12.4 percent of the total population in 2000; this age segment grew to an estimated 17 percent in 2020 and is expected to grow to more than 23 percent of the total population in 2060. The 45 - 64 age segment is also projected to grow, from 22 percent in 2000 to 24 percent in 2060. However, the percentage of residents under 18 years of age is projected to decrease from approximately 26 percent of the population in 2000 to 20 percent in 2060, while the 18 - 44 age segment is expected to account for nearly 33 percent of residents in 2060, compared to 40 percent in 2000.

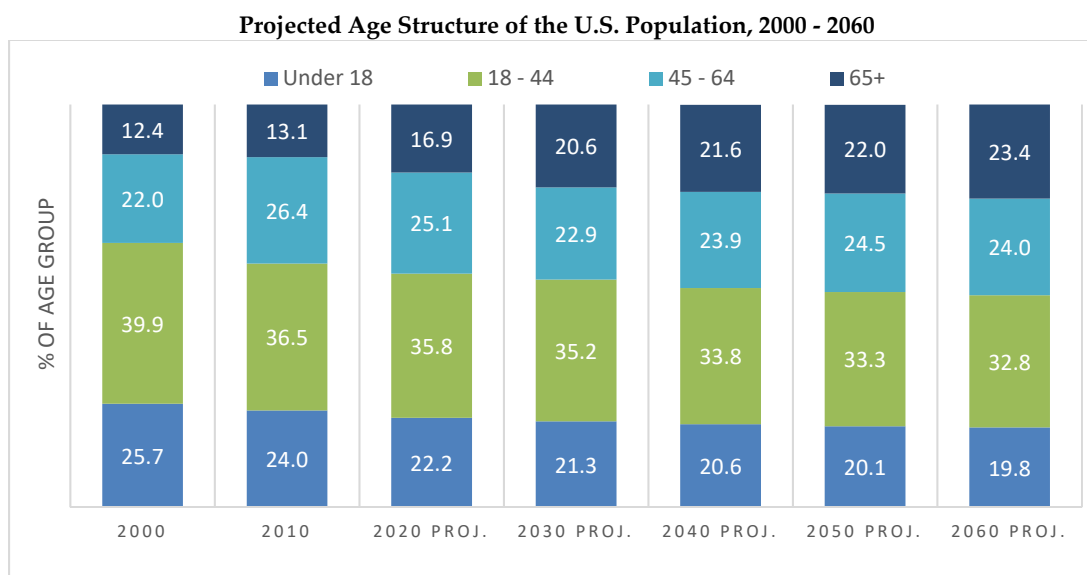


Figure 3 - Projected Age Structure of the U.S. Population
Source: Census Bureau

Census Bureau estimates indicate that in New York State, between 2010 and 2020, the 19 and under segment decreased from approximately 25 to 23 percent of the population; however, during the same period, the segment of residents aged 65-and older grew from 13 to 17 percent.

On Long Island, population trends correspond with trends seen in New York State and the nation. Both Nassau and Suffolk Counties saw a decline in the number of residents aged 19 and under between 2010 and 2020. In 2010, nearly 26 percent of Nassau’s population and 27 percent of Suffolk’s population was of this age; by 2020, this group had shrunk to 23.7 percent of the population in Nassau County and 23.1 percent in Suffolk County. However, there has been a significant increase in the share of the senior population, which is reflected in the median age of Long Islanders. Nassau County’s median age in 2010 was 41.1 years, but rose to 41.9 years in 2020; Suffolk County noted an increase from 39.8 years in 2010 to 42.1 years in 2020. The 2020 median age in both counties is higher than New York State’s median age (39.4 years) and the nation’s (38.6 years) median age (*note: 2020 Census data for age groups has not yet been released; data is estimated as reported by the Census Bureau*).

The age structure of the resident population in the Port Jefferson Union Free School District has also shifted between 2010 and 2019. The segment of residents aged 19 years or younger increased from 23.5 to 24.3 percent; the percentage of residents aged 65+ also increased, growing from 17.8 to 22.8 percent. However, there was a decrease in the 40 - 64 age group, from 38.8 to 33.0 percent. The median age in the district was 45.9 years in 2019 (*latest available data*).

According to *Census* estimates, there were approximately 44.9 million foreign born residents living in this country in 2019, which is more than any other country in the world. As shown in Table 2, the foreign-born population in the United States has grown significantly between 1970 and 2019, increasing from approximately 9.6 million people to 44.9 million people. The immigrant portion of the total United States population grew from 4.7 to 13.6 percent, during this period. *Census Bureau* projections indicate that the foreign-born population will continue to grow to an estimated 69.3 million people by 2060, accounting for 17.1 percent of the United States population.

Table 2 - Foreign-Born Population in the United States from 1970 to 2060

Year	1970	1980	1990	2000	2010	2019	2020	2030	2040	2050	2060
Number of Immigrants (Millions)	9.6	14.1	19.8	31.1	38.7	44.9	46.7	53.8	60.2	65.3	69.3
Immigrant Share of Total U.S Population	4.7%	6.2%	7.9%	11.1%	12.7%	13.6%	14.0%	15.1%	16.1%	16.8%	17.1%

Sources: Census Bureau & Center for Immigration Studies

As of 2019, the majority of the foreign-born population in the United States has immigrated from Latin America (nearly 51 percent), followed by Asia (31 percent) and Europe (11 percent). This is a significant shift since 1960, when 75 percent of immigrants were from Europe, nine percent were from Latin America and five percent were from Asia. However, in most years since 2010, more immigrants have migrated from Asia than from Latin American countries. Beginning with the *Great Recession* followed by impacts from the COVID-19 pandemic, immigration from Latin America has slowed considerably, particularly from Mexico. The Asian population is expected to continue growing and is projected to become the largest immigrant group in the United States by 2055, surpassing Hispanics. Data from the *Pew Research Center* estimates that by 2065, Asians are expected to comprise 38 percent of all immigrants in this country, while Hispanics are expected to comprise 31 percent. Forty-five percent of Asians in the United States live in the west, followed by the south (24 percent), northeast (19 percent) and Midwest (12 percent).

The *Migration Policy Institute* reported that 17.8 million children under age 18 lived with at least one foreign-born parent in the United States in 2019. The five states with the greatest numbers of children under age 18 living with immigrant parents were California (4 million), Texas (2.4 million), New York (1.4 million), Florida (1.4 million) and New Jersey (769,000).

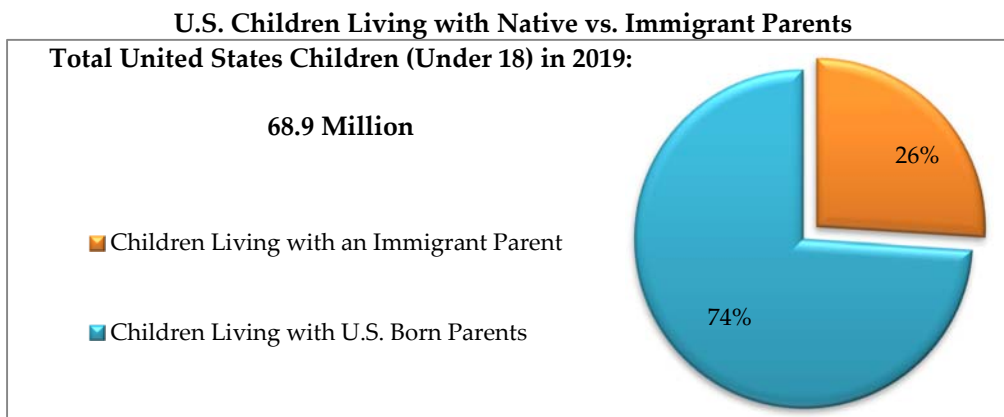


Figure 4 - U.S. Children in Immigrant Families
Source: Migration Policy Institute

The foreign-born population in New York State increased by 5.7 percent between 2010 and 2019, growing from approximately 4.2 million people in 2010 to more than 4.4 million people in 2019, accounting for an estimated 22.6 percent of residents. The foreign-born population in New York is comprised of approximately 49 percent of people from Latin America, 29 percent from Asia and 16 percent from Europe.

In Nassau County, the foreign-born population increased from 20.7 to an estimated 22.4 percent between 2010 and 2019. In Suffolk County, the foreign-born population increased from 14.0 to an estimated 15.6 percent between 2010 and 2019. According to Census Bureau estimates, the foreign-born population in the Port Jefferson Union Free School District increased between 2010 and 2019 (*latest available data*), from 12.9 to 15.9 percent of the resident population.

Recent trends in immigration have contributed to changes in the ethnic structure of the population in the United States. These trends, combined with the projected loss in the White population, due to mortalities as the baby boom cohort reaches the oldest ages, is expected to result in an increasingly diverse population in the near future.

As shown in Figure 5, nearly 58 percent of the population was White in 2020, down from approximately 64 percent in 2010 and 69 percent in 2000. The White segment is expected to continue decreasing through 2060, while growth is forecasted in each of the minority groups. By 2060, the combined minority population is expected to account for approximately 56 percent of the total population, up from 42 percent in 2020. According to the 2020 Census, Hispanics were the largest minority group, comprising nearly 19 percent of the population, followed by Blacks (12.1 percent), Asian/others (7.3 percent) and those identifying themselves as two or more races (4.1 percent). The Hispanic segment is expected to continue to be the largest minority group, accounting for approximately 29 percent of the total population by 2060. The population of people identified as two or more races is projected to more than double by 2060, when compared to 2020.

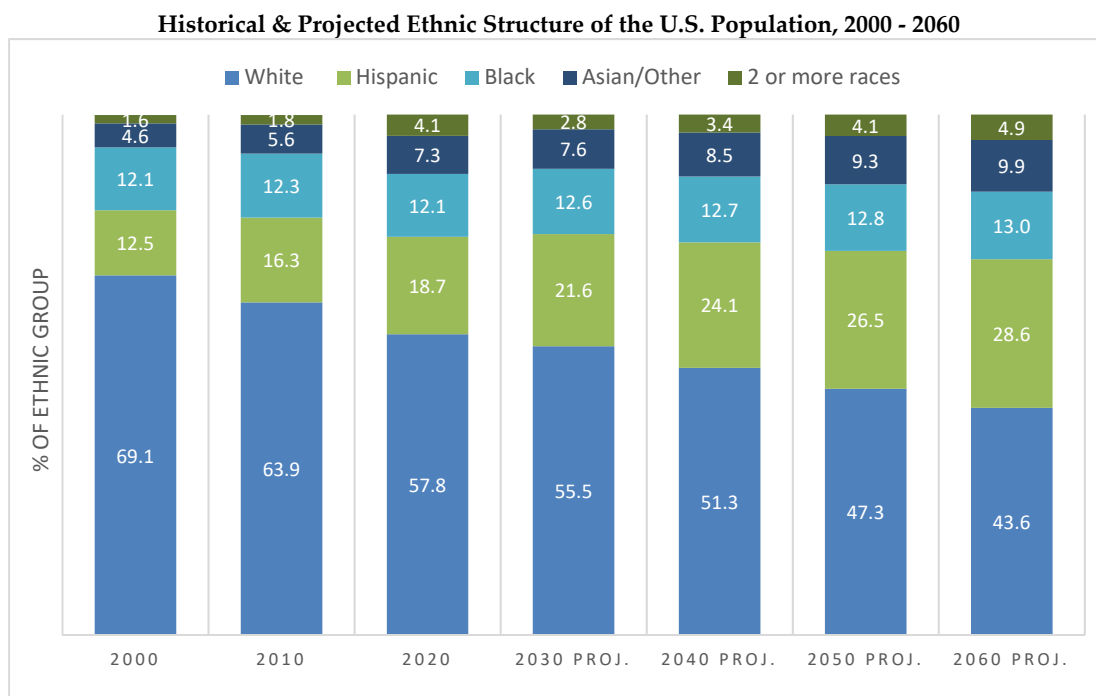


Figure 5 - Historical & Projected Ethnic Structure of the U.S. Population
Source U.S. Census Bureau

The ethnic composition within New York State has shifted between 2010 and 2020. According to 2020 Census data, the White segment comprised approximately 53 percent of the population in 2020, down from 58 percent in 2010, while the minority segments comprised approximately 47 percent of State residents. Hispanics are the largest minority group at nearly 20 percent, followed by Blacks (13.7 percent), Asian/others (10.8 percent) and those identifying themselves as two or more races (3.6 percent). There are six states that are “majority-minority,” which include California, Hawaii, Maryland, New Mexico, Texas and Nevada.

Long Island’s population has also experienced demographic changes between 2010 and 2020. In Nassau County, the White segment of the population decreased from 65.5 to less than 56 percent, while the Hispanic and Asian/others segments of the population increased from 14.6 to 18.4 percent, and from 8.1 to almost 13 percent, respectively. The Black segment remained stable during this period (10.5 percent); less than three percent of residents identified themselves as two or more races in 2020. In Suffolk County, the White segment of the population decreased from approximately 72 to 63 percent, while the Hispanic segment grew from 16.5 to almost 22 percent. The Black and Asian/others segments represented 7 and 5 percent, respectively, while those residents identifying as two or more races accounted for less than 3 percent of the population in 2020.

The ethnic composition of the resident population within the Port Jefferson Union Free School District has changed between 2010 and 2020. In 2020, the White segment accounted for nearly 81 percent of residents, which represents a decrease from 86.7 percent in 2010. The Hispanic segment increased from 5.0 to 7.8 percent during this period. In 2020, Asian/others represented 6.8 percent, while Blacks and those identifying as two or more races, each represented less than 5 percent of the resident population.

C. HOUSING

Real estate markets in many areas of the country continue to feel the impact of the COVID-19 pandemic. The historically tight supply of inventory, coupled with high demand, has caused housing prices to rise steeply, especially in the New York metropolitan area. Rising home costs are preventing many young adults from being able to purchase a home as they are faced with limited funds and substantial college debt.

Data from *the New York State Association of Realtors* (NYSAR) indicates closed sales in New York State were down 8.3 percent in November 2021 when compared to the prior year, while the median sale price increased in November to \$370,000, representing a year-over-year increase of 12.1 percent. Growth in median sale prices is likely to persist, due to a limited supply of available inventory in many areas. Statewide, the number of homes for sale fell by nearly 27 percent in November when compared to the prior year. A strong housing market generally offers a 6.5-month supply of inventory; however, data from NYSAR indicates that there was a 2.8-month supply of available inventory as of November 2021.

In September, the residential real estate markets in Nassau and Suffolk Counties posted monthly year-to-year sales losses of 6.6 and 10.7 percent, respectively. In Nassau County, there were 1,344 completed home sales reported for the month of September, compared to 1,439 the previous September, in Suffolk County there were 1,629 completed home sales reported, compared to 1,825 the previous September. However, the median sale price increased in both Nassau and Suffolk Counties in September, with gains of 12.9 percent, in each county. Growth in the median sale prices appears to be the result of a tight supply of available inventory.

Table 3 - Number of Home Sales and Median Prices in Nassau and Suffolk Counties

County	November 2021		November 2020		Change	
	# Sales	Median Price	# Sales	Median Price	# Sales	Median Price
Nassau County	1,189	\$665,000	1,471	\$599,000	-19.2%	9.3%
Suffolk County	1,492	\$520,000	1,754	\$471,500	-14.9%	10.3%

Source: One Key MLS

As shown in Table 4, housing turnover in the Port Jefferson Union Free School District was at the lowest level of the historical period (2009 - 2020) in 2011 when 63 units were sold. Subsequently sales peaked in 2018, with 108 units sold that year. The median sale price increased to \$558,750 in 2020; this represents a gain of more than 31 percent when compared to the period low median price of \$425,250 recorded in 2012.

Table 4 - Home Sales in the Port Jefferson UFSD 2009 - 2020

Year	Number Sold	Median Price
2009	66	\$525,000
2010	75	\$560,000
2011	63	\$450,000
2012	64	\$425,250
2013	87	\$467,500
2014	70	\$489,927
2015	76	\$511,000
2016	76	\$482,000
2017	103	\$484,000
2018	108	\$488,000
2019	89	\$550,000
2020	88	\$558,750

Source: NYS Office of Real Property Services

Housing data for the area encompassed by the Port Jefferson Union Free School District indicated that in 2019 (latest available data), 94 percent of the total housing was occupied and six percent was vacant. Housing can be inhabited by the owner of the house or a renter. In 2019, approximately 74 percent of housing in the district was owner occupied and 26 percent was renter occupied.

The Planning and Development Departments of the Town of Brookhaven and the Villages of Port Jefferson and Belle Terre were contacted regarding the status of current building projects, as well as any new proposals before the planning board. The Villages of Port Jefferson and Belle Terre reported on new projects as detailed in Table 5.

Table 5 - Approved and Proposed Housing in the Port Jefferson UFSD

Project name	Location	#of Units	Status
<i>Town of Brookhaven</i>			
No projects reported			
<i>Village of Port Jefferson</i>			
The Brookport	440 Main Street	46 apartments	Under construction
Conifer Realty LLC	1615 Main Street	45 apartments	Under construction
Map of Jefferson (High Street) Hollow*		6 lot subdivision	Issued 2 permits/3 CO's
Overbay LLC*	217 West Broadway	52 apartments; 6-1BR, 46 2-BR	Issued CO 7/16/21
Pine Hill Woods	Pine Hill Road	6 lot subdivision	No construction
Port Development LLC	1 N Country Road	36 apartments	Planning approval 6/10/21
Shipyard*	201 West Broadway	112 apartments; 42 1-BR, 70 2-BR	Issued CO 12/28/17
Village Vistas*	Liberty Avenue	43 condos – senior units	Construction complete 2017
<i>Village of Belle Terre</i>			
Accardo Subdivision	Bell Circle	2-sf	Approved 5/25/21

Source: Town of Brookhaven, Villages of Port Jefferson and Belle Terre Planning Department

*indicates change since last report

BOLD = new since last report

The *Census Bureau* reported that the homeownership rate for the third quarter of 2020 was 67.4 percent; this compares to the ten-year (2010-2020) low of 62.9 percent recorded in 2016. In the third quarter of 2020, the homeownership rate was highest amongst individuals aged 65+ (80.7 percent), followed by the 55 - 64, 45 - 54 and 35 - 44 age segments, with homeownership rates of 76.4, 72.0 and 63.9 percent, respectively. Young adults under the age of 35 recorded the lowest homeownership rate at 40.2 percent in the third quarter of 2020. It should be noted that each age segment, with the exception of individuals aged 65+, recorded a lower homeownership rate when compared to the previous quarter.

Data from the *Pew Research Center* shows that a majority (52 percent) of young adults (18-29 years) lived with their parents in 2020; this is the highest level recorded for this age group since the *Great Depression*. This trend has increased since the onset of the COVID-19 pandemic; however, as shown in Figure 6, increases have been observed since 1960, when the share of young adults living with their parents was 29 percent.

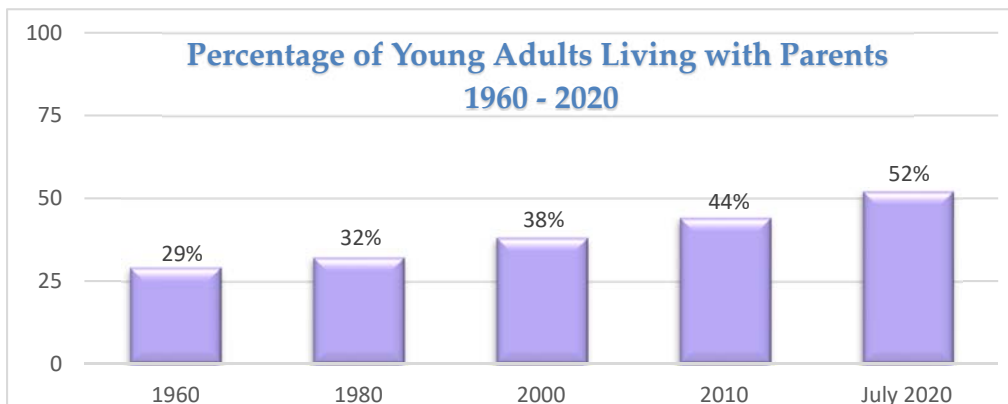


Figure 6 - Percentage of Young Adults Living with Parents 1960 - 2020
Source: Pew Research Center

D. NON-PUBLIC SCHOOL ENROLLMENT

Enrollment data from the *Census Bureau* shows that there were 5.7 million K - 12 students (10.7 percent of all school-age children) attending private schools in the United States during the 2019-20 school year (latest available data). Private school enrollment declined by nearly 300,000 students between 2010 and 2019, with further losses expected in the future.

According to the *NYS Education Department*, private schools in New York State enrolled approximately 353,000 students in 2019. This reflects a decrease of 13.2 percent since 2010, when nearly 408,000 students attended private schools, and represents approximately 13 percent of all NY State school age children (*data does not include students enrolled in charter schools*).

Between the 2010-11 and 2020-21 school years, non-public school enrollment also decreased on Long Island, dropping from 13.1 to 12.2 percent of all school age children in Nassau County and from 5.8 to 4.7 percent in Suffolk County.

This year, 53 Port Jefferson Union Free School District students (5.5 percent) are attending non-public schools. Non-public school enrollment has declined since 2014, when 85 children, or 7.0 percent of district resident students, attended private schools. It should be noted that the local Catholic elementary school, Our Lady of Wisdom, recently closed at the end of the 2019-20 school year.

Steady drops in Catholic school enrollment have impacted private school enrollment. Catholic school enrollment was at its peak in the early 1960's, when more than 5.2 million students were enrolled. Declines have occurred since then, with a significant decrease of 111,000 students recorded last year (2020-21); this is the largest single year drop since the 1972-73 school year. This recent decline impacted primarily lower income communities, where parents were unable to pay tuition during the pandemic. However, some Catholic schools (as well as other independent schools) recorded gains in enrollment last year as parents opted for full-time in-person instruction offered at most private schools.

Growth in the number of charter schools throughout the United States has also impacted private school enrollment. Charter schools offer a tuition-free alternative to traditional public-school settings, while often providing individualized instruction offered in private schools. As shown in Figure 7, data from the *National Alliance for Public Charter Schools* shows that charter school enrollment increased significantly between 2008 and 2018 (latest available data), growing from 1.4 to 3.3 million students. In 2018, there were approximately 7,500 charter schools in the United States, enrolling 6.5 percent of all public-school students.

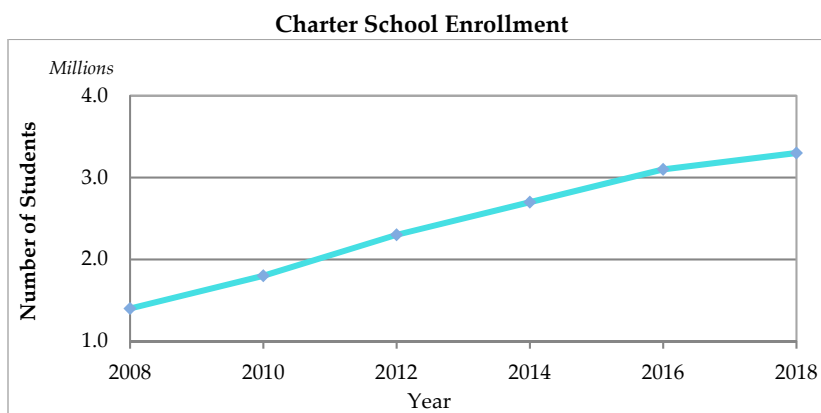


Figure 7 - Charter School Enrollment

The *New York State Education Department*, reported that for the 2021-22 school year there are 354 charter schools serving over 150,000 students in New York State, with an additional 50 charter schools approved to open in in the near future. At the present time, there are five charter schools in operation on Long Island, located in Hempstead (2), Riverhead, Roosevelt and Uniondale. In addition, proposed charter schools in Central Islip and Wyandanch recently received state approval to open in September 2022.

Estimates from the *National Home Education Research Institute* indicate that there were between four to five million students being homeschooled during the 2020-21 school year; this compares to approximately 2.5 million students being homeschooled during the 2019-20 school year. This growth is attributed to the Covid-19 pandemic, as learning environments were adjusted in both public and private schools in an attempt to prevent further spread of the virus. This resulted in some parents choosing to provide an education for their children at home. Prior to the pandemic, growth in homeschooling had already been credited to several factors including the ability of customize education and cover more material, the potential of strengthening family relationships, the desire to provide a safer environment and the ability to teach toward a specific set of values or beliefs.

E. ENROLLMENT PROJECTION METHODOLOGY

The *Cohort Survival Technique* was used to project the district's enrollment patterns for the next ten years. Three fundamental inputs were essential:

1. Actual enrollment by grade for 2011 - 2021 for the district [Appendix A-1] and each school [Appendix A-7, A-9, A-10].
2. Grade-to-grade retention (migration) ratios for each two-grade transition to grades 1 - 12 for the past ten years for the district [Appendix A-1] and each school [Appendix A-7, A-9, A-10].
3. Projected kindergarten entering cohorts based on the number of live births in Suffolk County, with consideration given to school district births, five years before each year projected [Appendix A-3].

The *Cohort Survival Model* takes into consideration the normal community processes that affect school enrollment, which include:

1. The number of births and fertility rates
2. Typical in and out migration
3. Transfers to and from non-public schools
4. Population variations
5. Resident family characteristics

The enrollment projections contained within this study are based on assumptions generated through the demographic analysis. *This analysis led to the following conjectures:*

1. Population will remain stable due to limited new residential development within the district. The turnover of approximately 75 - 120 homes each year is anticipated to continue.
2. Future kindergarten classes are anticipated to be maintained at a level close to those seen from 2017 through 2020, relative to housing turnover and changes in population.
3. Non-public school enrollment is expected to remain at between 5 - 6 percent of district resident students.

The *Cohort Survival Model* is very accurate in forecasting future enrollment patterns, but the occurrence of certain conditions would warrant modifications in these projections. *These conditions include:*

- A level of new housing activity or a change in the level of housing turnover that is significantly higher or lower than that experienced by the district during the past three years.
- Expansion, consolidation, closing or the formation of new non-public or charter schools.
- Major sociological changes or changed values/attitudes affecting anticipated family size and birthrate.
- Household characteristics that significantly differ from the past three to five years, including the number of persons per household and the age of household occupants.
- A major local or national crisis resulting in a significant change to economic conditions that affect employment, finance and housing in a manner that deviates from the past three to five years.

It is important for the reader to understand the nature of enrollment projections. Regardless of the methodology applied to produce projections, *all outcomes fall into three categories of reliability:*

- Category 1* - Those projections based on students already enrolled in the system are the most reliable projections.
- Category 2* - Those projections based on documented births are slightly less reliable than those of Category 1.
- Category 3* - Those projections based on estimates of future births are the least reliable.

Therefore, the most reliable projections are those calculated for the periods closest in time. Projections for periods further out in time are less reliable, particularly those beyond five years from the year of the study. The five-year period (2022 - 2026) projections are those best used in district planning and decision making. That is because this period consists mainly of Category 1 projections.

It is noted that the overall enrollment projections produced by Western Suffolk BOCES generally fall within a 4 percent margin of error. The greatest discrepancies in projections occur in the smallest subsets of those projections. For example, the projections for the district as a whole are likely to be the most accurate, while the projection of a building's particular grade level in a specific year is likely to be the least accurate. It is recommended that updates to projections be continued on a periodic basis to maintain modifications required by subtle shifts in migration trends and demographic factors.

F. DISTRICT ENROLLMENT

The Port Jefferson Union Free School District educates students within grades K - 12 in three district schools. Grades K - 5 are housed at the Edna Louise Spear Elementary School, grades 6 - 8 are housed at Port Jefferson Middle School and students in grades 9 - 12 attend Earl L. Vandermeulen High School.

Table 6 presents the current and projected enrollment through 2031 for the district and each grade configuration. It is shown that the elementary (K - 5) grade configuration is expected to reach its projection period peak enrollment in 2027, while the middle (6 - 8) grades are forecasted to enroll the greatest number of students in 2022. The high school (9 - 12) grade configuration is expected to be at its peak enrollment in 2023. District enrollment (K - 12) is expected to be at its projection period peak in 2022, when 891 students are anticipated; this is a decrease of 17 students, when compared to the current enrollment.

Table 6 - Projected Port Jefferson UFSD Enrollment

Year	K - 5	6 - 8	9 - 12	K - 12
Actual 2021	344	231	333	908
Projected 2022	338	220*	333	891*
2023	347	207	334*	888
2024	351	198	320	869
2025	350	192	304	846
2026	351	188	288	827
2027	364*	169	277	810
2028	362	169	263	794
2029	344	184	253	781
2030	328	211	236	775
2031	322	211	233	766

*denotes peak enrollment during 2022 - 2031

District enrollment [Appendix A-1,A-4] consisted of 1,212 students in grades K - 12 in 2011; this was the historical peak enrollment. Subsequently, losses in nine of the last ten years led to the current enrollment of 908 students in 2021. This represents a loss of 304 students, or 25.1 percent, during the historical period.

Enrollment is expected to further decrease during the projection period. The forecasted 2031 enrollment of 766 students represents a loss of 142 students, or 15.6 percent, when compared to the current enrollment.

The projected enrollment can be attributed to several factors:

- ☞ **First**, the kindergarten enrolled between 68 - 81 students per year between 2011 and 2016, and between 52 - 65 students from 2017 through 2020. There are 43 students enrolled in 2021. During the next four years, kindergarten cohorts are expected to be close to those seen in recent years (55 - 67 students). Beginning in 2026, kindergarten enrollment is projected to be at a lower level, with 50 - 53 students expected each year between 2026 and 2031 [Appendix A-3].
- ☞ **Second**, the incoming kindergarten class was smaller than the exiting twelfth grade class of the previous year in each of the last ten years. This trend is expected to continue, with losses of between 9 - 29 students each year through 2031, due to this displacement [Appendix A-6].
- ☞ **Third**, migration ratios show year-to-year fluctuations. On average, the district gains students in transition to most grades; first, tenth and eleventh grades are exceptions, with average losses recorded in transition. However, any gains in transition will be minimized by the losses through displacement [Appendix A-1].
- ☞ **Fourth**, the average grade level size decreased in grades K - 12 during 2016 - 2021 as compared to 2011 - 2016. Grade level size decreases are anticipated in grades K - 12 during 2021 - 2026; grade level size decreases are expected in kindergarten and grades 1, 2 and 6 - 12 during 2026 - 2031 [Appendix A-6].

G. ENROLLMENT OF GRADE CONFIGURATIONS

PRE-KINDERGARTEN ENROLLMENT *[Appendix A-2, A-5]*

The pre-kindergarten program housed at Edna Louise Spear Elementary School enrolled 30 - 60 students each year from 2011 through 2019; there are currently 25 students enrolled in two half-day sections. It is anticipated that the district will implement a full day pre-kindergarten program in 2022, with 36 students enrolled in two sections.

ELEMENTARY GRADES (K - 5) ENROLLMENT *[Appendix A-2, A-5]*

Edna Louise Spear Elementary School *[Appendix A-7, A-8]*

Edna Louise Spear Elementary School enrolled of 531 students in grades K - 5 in 2011; this was the historical peak enrollment. Subsequently, losses in nine of the last ten years led to the enrollment of 346 students in 2021. A loss of 185 students, or 34.8 percent, is noted during the historical period.

Smaller decreases are forecasted in six of the next ten years. The 2031 enrollment of 322 students represents a loss of 24 students, or 6.9 percent, when compared to the current enrollment.

Edna Louise Spear Elementary School displays the average trend to lose students in transition to first grade and gain students in progression to grades 2 - 5. However, the entering kindergarten class is expected to be smaller than the exiting fifth grade class of the previous year in seven of the next ten years, minimizing the gains occurring through transition. These factors will lead to the projected enrollment pattern.

ELEMENTARY INSTRUCTIONAL SECTIONS

The current and projected need for elementary instructional sections is presented in Table 7. These needs are based on the following class size guidelines:

Pre-kindergarten	maximum of 18 students
Grades K - 3	maximum of 20 students
Grades 4 - 5	maximum of 22 students

It is shown that the district currently houses 23 sections for the instruction of pre-kindergarten and grades K - 5, including two sections of self-contained special education. The average section size (K - 5) is 17.9 students, ranging from an average of 14.3 students in kindergarten to 20.7 students in third grade. The projected pre-kindergarten and K - 5 enrollment suggests the need for 22 - 24 sections, including two sections of self-contained special education, throughout the projection period. When compared to the current allocation of sections, it is anticipated that the district will require the one fewer section (22) next year and between 22 - 24 sections for the remainder of the projection period. [Appendix A-8].

Table 7 - Projected Port Jefferson UFSD Elementary Instructional Sections

Year		Pre-k	K - 5	Total Pre-k, K - 5
Actual	2021	2	21	23
Projected	2022	2	20	22
	2023	2	21	23
	2024	2	22	24
	2025	2	21	23
	2026	2	22	24
	2027	2	22	24
	2028	2	22	24
	2029	2	21	23
	2030	2	20	22
	2031	2	20	22

*includes self-contained special education sections

MIDDLE GRADES ENROLLMENT (6 - 8) *[Appendix A-2, A-5]*

Port Jefferson Middle School *[Appendix A-9]*

Port Jefferson Middle School enrolled 280 students in grades 6 - 8 in 2011. A gain the following year resulted in the historical peak enrollment of 307 students in 2012. Subsequently, losses in five of the remaining historical years led to the current enrollment of 229 students in 2021. A loss of 51 students, or 18.2 percent, is noted during the historical period.

Decreases are expected in each of the next six years. The forecasted 2031 enrollment of 211 students represents a loss of 18 students, or 7.9 percent, when compared to the current enrollment.

This school displays the average trend to gain students in progression to both seventh and eighth grades. However, the entering sixth grade class is expected to be smaller than the exiting eighth grade class of the previous year in eight of the next ten years, minimizing the gains occurring through migration. These factors will result in the projected enrollment pattern.

SECONDARY GRADES ENROLLMENT (9 - 12) *[Appendix A-2, A-5]*

Earl L. Vandermeulen High School *[Appendix A-10]*

Earl L. Vandermeulen High School enrolled 401 students in grades 9 - 12 in 2011; this was the historical peak enrollment. Subsequently, losses in seven of the last ten years led to the current enrollment of 333 students in 2021. A loss of 68 students, or 17 percent, is noted during the historical period.

Decreases are expected in eight of the next ten years. The forecasted 2031 enrollment of 233 students represents a loss of 100 students, or 30 percent, when compared to the current enrollment.

This school displays the average trend to lose students in transition to tenth and eleventh grades and gain students in transition to twelfth grade. The entering ninth grade class is expected to be smaller than the exiting twelfth grade class of the previous year in eight of the next ten years. These factors will result in the projected enrollment pattern.

Table 8 displays the current and projected middle and high school enrollments for the Port Jefferson Union Free School District. It is shown that the Middle School and the High School are expected to be at their projection period peak enrollments in 2022 and 2023, respectively. The combined middle school and high school enrollment is expected to be at its peak next year in 2022, when 553 students are anticipated; this is nine fewer students than are currently enrolled.

Table 8 - Projected Port Jefferson UFSD Middle & High School Enrollment

Year		Port Jefferson MS (6 - 8)	Vandermeulen HS (9 - 12)	Total Enrollment (6 - 12)
Actual	2021	229	333	562
Projected	2022	220*	333	553*
	2023	207	334*	541
	2024	198	320	518
	2025	192	304	496
	2026	188	288	476
	2027	169	277	446
	2028	169	263	432
	2029	184	253	437
	2030	211	236	447
	2031	211	233	444

*denotes peak enrollment during 2022 - 2031

Appendix A

PORT JEFFERSON UNION FREE SCHOOL DISTRICT
HISTORICAL ENROLLMENT

GRADE	2011	2012	2013	2014	2015	2016	2017	2018	2019	2020	2021
PRE-KINDERGARTEN	60	48	49	45	40	40	38	34	30	0	25
KINDERGARTEN	81	79	74	70	68	77	58	65	55	52	43
FIRST	77	82	73	73	69	66	70	54	61	51	51
SECOND	65	78	77	77	79	77	73	74	58	62	57
THIRD	102	65	84	78	78	79	81	68	76	56	62
FOURTH	96	103	68	85	74	82	81	78	72	71	60
FIFTH	107	92	100	73	83	76	83	84	83	70	66
SIXTH	91	104	88	99	73	84	82	86	79	80	74
SEVENTH	107	90	103	87	99	78	83	88	87	80	76
EIGHTH	81	110	90	100	85	104	80	83	90	82	79
NINTH	108	78	106	86	94	87	109	85	79	88	85
TENTH	102	101	80	100	85	90	87	110	83	75	90
ELEVENTH	89	102	101	79	100	88	93	85	108	77	75
TWELFTH	101	90	97	105	79	98	89	96	83	109	79
UNGRADED	5	4	7	10	7	9	8	9	8	9	11
TOTAL K - 12	1,212	1,178	1,148	1,122	1,073	1,095	1,077	1,065	1,022	962	908
CHANGE		-34	-30	-26	-49	22	-18	-12	-43	-60	-54
% CHANGE		-2.8%	-2.5%	-2.3%	-4.4%	2.1%	-1.6%	-1.1%	-4.0%	-5.9%	-5.6%
TOTAL w/PK	1,272	1,226	1,197	1,167	1,113	1,135	1,115	1,099	1,052	962	933

Note: 2011-2019 data: finalized BEDS posted by NYSED; 2020 & 2021: BEDS in the SIRS 313 forms provided by the district with revisions in the elementary grades for both yrs

Note: The PK program was suspended in 2020 due to COVID social distancing requirements to reduce class sizes for grades K - 5 in the elementary school.

DISTRICT MIGRATION	11 - 12	12 - 13	13 - 14	14 - 15	15 - 16	16 - 17	17 - 18	18 - 19	19 - 20	20 - 21	AVERAGE
K - 1	101.2%	92.4%	98.6%	98.6%	97.1%	90.9%	93.1%	93.8%	92.7%	98.1%	95.6%
1 - 2	101.3%	93.9%	105.5%	108.2%	111.6%	110.6%	105.7%	107.4%	101.6%	111.8%	107.4%
2 - 3	100.0%	107.7%	101.3%	101.3%	100.0%	105.2%	93.2%	102.7%	96.6%	100.0%	100.9%
3 - 4	101.0%	104.6%	101.2%	94.9%	105.1%	102.5%	96.3%	105.9%	93.4%	107.1%	101.1%
4 - 5	95.8%	97.1%	107.4%	97.6%	102.7%	101.2%	103.7%	106.4%	97.2%	93.0%	102.1%
5 - 6	97.2%	95.7%	99.0%	100.0%	101.2%	107.9%	103.6%	94.0%	96.4%	105.7%	101.5%
6 - 7	98.9%	99.0%	98.9%	100.0%	106.8%	98.8%	107.3%	101.2%	101.3%	95.0%	101.2%
7 - 8	102.8%	100.0%	97.1%	97.7%	105.1%	102.6%	100.0%	102.3%	94.3%	98.8%	100.9%
8 - 9	96.3%	96.4%	95.6%	94.0%	102.4%	104.8%	106.3%	95.2%	97.8%	103.7%	100.7%
9 - 10	93.5%	102.6%	94.3%	98.8%	95.7%	100.0%	100.9%	97.6%	94.9%	102.3%	98.9%
10 - 11	100.0%	100.0%	98.8%	100.0%	103.5%	103.3%	97.7%	98.2%	92.8%	100.0%	98.4%
11 - 12	101.1%	95.1%	104.0%	100.0%	98.0%	101.1%	103.2%	97.6%	100.9%	102.6%	101.1%

PORT JEFFERSON UNION FREE SCHOOL DISTRICT
HISTORICAL ENROLLMENT BY GRADE CONFIGURATION

GRADE	2011	2012	2013	2014	2015	2016	2017	2018	2019	2020	2021
PRE-KINDERGARTEN	60	48	49	45	40	40	38	34	30	0	25
KINDERGARTEN	81	79	74	70	68	77	58	65	55	52	43
FIRST	77	82	73	73	69	66	70	54	61	51	51
SECOND	65	78	77	77	79	77	73	74	58	62	57
THIRD	102	65	84	78	78	79	81	68	76	56	62
FOURTH	96	103	68	85	74	82	81	78	72	71	60
FIFTH	107	92	100	73	83	76	83	84	83	70	66
UNGRADED	3	0	2	5	3	4	1	3	2	4	5
TOTAL K - 5	531	499	478	461	454	461	447	426	407	366	344
CHANGE		-32	-21	-17	-7	7	-14	-21	-19	-41	-22
% CHANGE		-6.0%	-4.2%	-3.6%	-1.5%	1.5%	-3.0%	-4.7%	-4.5%	-10.1%	-6.0%
TOTAL w/ PK	591	547	527	506	494	501	485	460	437	366	369
SIXTH	91	104	88	99	73	84	82	86	79	80	74
SEVENTH	107	90	103	87	99	78	83	88	87	80	76
EIGHTH	81	110	90	100	85	104	80	83	90	82	79
UNGRADED	1	3	0	3	2	0	2	1	2	1	2
TOTAL 6 - 8	280	307	281	289	259	266	247	258	258	243	231
CHANGE		27	-26	8	-30	7	-19	11	0	-15	-12
% CHANGE		9.6%	-8.5%	2.8%	-10.4%	2.7%	-7.1%	4.5%	0.0%	-5.8%	-4.9%
NINTH	108	78	106	86	94	87	109	85	79	88	85
TENTH	102	101	80	100	85	90	87	110	83	75	90
ELEVENTH	89	102	101	79	100	88	93	85	108	77	75
TWELFTH	101	90	97	105	79	98	89	96	83	109	79
UNGRADED	1	1	5	2	2	5	5	5	4	4	4
TOTAL 9 - 12	401	372	389	372	360	368	383	381	357	353	333
CHANGE		-29	17	-17	-12	8	15	-2	-24	-4	-20
% CHANGE		-7.2%	4.6%	-4.4%	-3.2%	2.2%	4.1%	-0.5%	-6.3%	-1.1%	-5.7%
TOTAL K - 12	1,212	1,178	1,148	1,122	1,073	1,095	1,077	1,065	1,022	962	908
CHANGE		-34	-30	-26	-49	22	-18	-12	-43	-60	-54
% CHANGE		-2.8%	-2.5%	-2.3%	-4.4%	2.1%	-1.6%	-1.1%	-4.0%	-5.9%	-5.6%
TOTAL w/ PK	1,272	1,226	1,197	1,167	1,113	1,135	1,115	1,099	1,052	962	933

PORT JEFFERSON UNION FREE SCHOOL DISTRICT
KINDERGARTEN PROJECTIONS

Births			Enrollment		Ratios
Birth Year	Suffolk County	SD	Year	District K	K/ Conty Births
2006	19,080	50	2011	81	0.0042
2007	18,510	61	2012	79	0.0043
2008	17,984	47	2013	74	0.0041
2009	17,183	58	2014	70	0.0041
2010	16,805	47	2015	68	0.0040
2011	16,027	44	2016	77	0.0048
2012	15,727	45	2017	58	0.0037
2013	15,530	47	2018	65	0.0042
2014	15,568	48	2019	55	0.0035
2015	15,808	29	2020	52	0.0033
2016	15,539	43	2021	43	0.0028
2017	15,334	39	2022	55	
2018	15,241	52	2023	67	
prelim. 2019	15,036	50	2024	66	
prelim. 2020	14,742		2025	55	
est. 2021	14,005		2026	52	
est. 2022	14,174		2027	53	
est. 2023	13,894		2028	52	
est. 2024	13,840		2029	51	
est. 2025	13,675		2030	51	0.0039
est. 2026	13,567		2031	50	historical average

Note: 2006-2018: all births as reported by DOH@NYS; 2019 & 2020 county births - reported by the CDC; 2019 SD births - preliminary count received from DOH@NYS

PORT JEFFERSON UNION FREE SCHOOL DISTRICT
PROJECTED ENROLLMENT

GRADE	2021	2022	2023	2024	2025	2026	2027	2028	2029	2030	2031
	Actual										
PRE-KINDERGARTEN	25	36	36	36	36	36	36	36	36	36	36
KINDERGARTEN	43	55	67	66	55	52	53	52	51	51	50
FIRST	51	41	53	64	63	53	50	51	50	49	49
SECOND	57	55	44	57	69	68	57	54	55	54	53
THIRD	62	58	55	44	58	70	69	58	54	55	54
FOURTH	60	63	59	56	44	59	71	70	59	55	56
FIFTH	66	61	64	60	57	45	60	73	71	60	56
SIXTH	74	67	62	65	61	58	46	61	74	72	61
SEVENTH	76	75	68	63	66	62	59	47	62	75	73
EIGHTH	79	77	76	69	64	67	63	60	47	63	76
NINTH	85	80	78	77	69	64	67	63	60	47	63
TENTH	90	84	79	77	76	68	63	66	62	59	47
ELEVENTH	75	89	83	78	76	75	67	62	65	61	58
TWELFTH	79	76	90	84	79	77	76	68	63	66	62
UNGRADED	11	10	10	9	9	9	9	9	8	8	8
TOTAL K - 12	908	891	888	869	846	827	810	794	781	775	766
CHANGE		-17	-3	-19	-23	-19	-17	-16	-13	-6	-9
% CHANGE		-1.9%	-0.3%	-2.1%	-2.6%	-2.2%	-2.1%	-2.0%	-1.6%	-0.8%	-1.2%
TOTAL w/PK	933	927	924	905	882	863	846	830	817	811	802

Note: As per the district, beginning 2022, PK program is anticipated to be of 2 full-day sections (36 students max). Each section is capped at 18 students.

Note: The shaded area denotes grade-level students already in the school system.

PORT JEFFERSON UNION FREE SCHOOL DISTRICT
PROJECTED DISTRICT ENROLLMENT BY GRADE CONFIGURATION:

GRADE	2021 Actual	2022	2023	2024	2025	2026	2027	2028	2029	2030	2031
PRE-KINDERGARTEN	25	36	36	36	36	36	36	36	36	36	36
KINDERGARTEN	43	55	67	66	55	52	53	52	51	51	50
FIRST	51	41	53	64	63	53	50	51	50	49	49
SECOND	57	55	44	57	69	68	57	54	55	54	53
THIRD	62	58	55	44	58	70	69	58	54	55	54
FOURTH	60	63	59	56	44	59	71	70	59	55	56
FIFTH	66	61	64	60	57	45	60	73	71	60	56
UNGRADED	5	5	5	4	4	4	4	4	4	4	4
TOTAL K - 5	344	338	347	351	350	351	364	362	344	328	322
CHANGE		-6	9	4	-1	1	13	-2	-18	-16	-6
% CHANGE		-1.7%	2.7%	1.2%	-0.3%	0.3%	3.7%	-0.5%	-5.0%	-4.7%	-1.8%
TOTAL w/ PK	369	374	383	387	386	387	400	398	380	364	358
SIXTH	74	67	62	65	61	58	46	61	74	72	61
SEVENTH	76	75	68	63	66	62	59	47	62	75	73
EIGHTH	79	77	76	69	64	67	63	60	47	63	76
UNGRADED	2	1	1	1	1	1	1	1	1	1	1
TOTAL 6 - 8	231	220	207	198	192	188	169	169	184	211	211
CHANGE		-11	-13	-9	-6	-4	-19	0	15	27	0
% CHANGE		-4.8%	-5.9%	-4.3%	-3.0%	-2.1%	-10.1%	0.0%	8.9%	14.7%	0.0%
NINTH	85	80	78	77	69	64	67	63	60	47	63
TENTH	90	84	79	77	76	68	63	66	62	59	47
ELEVENTH	75	89	83	78	76	75	67	62	65	61	58
TWELFTH	79	76	90	84	79	77	76	68	63	66	62
UNGRADED	4	4	4	4	4	4	4	4	3	3	3
TOTAL 9 - 12	333	333	334	320	304	288	277	263	253	236	233
CHANGE		0	1	-14	-16	-16	-11	-14	-10	-17	-3
% CHANGE		0.0%	0.3%	-4.2%	-5.0%	-5.3%	-3.8%	-5.1%	-3.8%	-6.7%	-1.3%
TOTAL K - 12	908	891	888	869	846	827	810	794	781	775	766
CHANGE		-17	-3	-19	-23	-19	-17	-16	-13	-6	-9
% CHANGE		-1.9%	-0.3%	-2.1%	-2.6%	-2.2%	-2.1%	-2.0%	-1.6%	-0.8%	-1.2%
TOTAL w/PK	933	927	924	905	882	863	846	830	817	811	802

PORT JEFFERSON UNION FREE SCHOOL DISTRICT
AVERAGE DISTRICT GRADE LEVEL SIZE

GRADE	1 11 - 16	2 16 - 21	3 21 - 26	4 26 - 31	2/1	change 3/2	4/3
KINDERGARTEN	75	58	56	52	-22.7%	-3.4%	-7.1%
FIRST	73	59	54	50	-19.2%	-8.5%	-7.4%
SECOND	76	67	58	57	-11.8%	-13.4%	-1.7%
THIRD	81	70	58	60	-13.6%	-17.1%	3.4%
FOURTH	85	74	57	62	-12.9%	-23.0%	8.8%
FIFTH	89	77	59	61	-13.5%	-23.4%	3.4%
SIXTH	90	81	65	62	-10.0%	-19.8%	-4.6%
SEVENTH	94	82	68	63	-12.8%	-17.1%	-7.4%
EIGHTH	95	86	72	63	-9.5%	-16.3%	-12.5%
NINTH	93	89	76	61	-4.3%	-14.6%	-19.7%
TENTH	93	89	79	61	-4.3%	-11.2%	-22.8%
ELEVENTH	93	88	79	65	-5.4%	-10.2%	-17.7%
TWELFTH	95	92	81	69	-3.2%	-12.0%	-14.8%

DISPLACEMENT BETWEEN ENTERING AND EXITING COHORTS

Year	Grade 12	Year	Grade K	Difference
2011	101	2012	79	-22
2012	90	2013	74	-16
2013	97	2014	70	-27
2014	105	2015	68	-37
2015	79	2016	77	-2
2016	98	2017	58	-40
2017	89	2018	65	-24
2018	96	2019	55	-41
2019	83	2020	52	-31
2020	109	2021	43	-66
2021	79	2022	55	-24
2022	76	2023	67	-9
2023	90	2024	66	-24
2024	84	2025	55	-29
2025	79	2026	52	-27
2026	77	2027	53	-24
2027	76	2028	52	-24
2028	68	2029	51	-17
2029	63	2030	51	-12
2030	66	2031	50	-16
Average Difference 2011 - 2016				-21
Average Difference 2016 - 2021				-40
Average Difference 2021 - 2026				-23
Average Difference 2026 - 2031				-19

=====

EDNA LOUISE SPEAR ELEMENTARY SCHOOL
HISTORICAL ENROLLMENT

=====

GRADE	2011	2012	2013	2014	2015	2016	2017	2018	2019	2020	2021
PRE-KINDERGARTEN	60	48	49	45	40	40	38	34	30	0	25
KINDERGARTEN	81	79	74	70	68	77	58	65	55	52	43
FIRST	77	82	73	73	69	66	70	54	61	51	51
SECOND	65	78	77	77	79	77	73	74	58	62	57
THIRD	102	65	84	78	78	79	81	68	76	56	62
FOURTH	96	103	68	85	74	82	81	78	72	71	60
FIFTH	107	92	100	73	83	76	83	84	83	70	66
SIXTH	0	0	0	0	0	1	1	0	0	2	0
SEVENTH											2
UNGRADED	3	0	2	5	3	4	1	3	2	4	5
TOTAL w/o PK	531	499	478	461	454	462	448	426	407	368	346
% CHANGE		-6.0%	-4.2%	-3.6%	-1.5%	1.8%	-3.0%	-4.9%	-4.5%	-9.6%	-6.0%
TOTAL w/ PK	591	547	527	506	494	502	486	460	437	368	371

Note: 2011-2019 data: finalized BEDS posted by NYSED; 2020 & 2021: BEDS in the SIRS 313 forms provided by the district with revisions in the elementary grades for both yrs

Note: PK BEDS counts show minor differences between E.L. Spear Elementary School and the district for most years; the enrollment at the district level is used for all years.

Note: The PK program was suspended in 2020 due to COVID social distancing requirements to reduce class sizes for grades K - 5 in the elementary school.

E. L. Spear ES Migration	11 - 12	12 - 13	13 - 14	14 - 15	15 - 16	16 - 17	17 - 18	18 - 19	19 - 20	20 - 21	AVERAGE
K - 1	101.2%	92.4%	98.6%	98.6%	97.1%	90.9%	93.1%	93.8%	92.7%	98.1%	95.6%
1 - 2	101.3%	93.9%	105.5%	108.2%	111.6%	110.6%	105.7%	107.4%	101.6%	111.8%	107.4%
2 - 3	100.0%	107.7%	101.3%	101.3%	100.0%	105.2%	93.2%	102.7%	96.6%	100.0%	100.9%
3 - 4	101.0%	104.6%	101.2%	94.9%	105.1%	102.5%	96.3%	105.9%	93.4%	107.1%	101.1%
4 - 5	95.8%	97.1%	107.4%	97.6%	102.7%	101.2%	103.7%	106.4%	97.2%	93.0%	102.1%

=====

EDNA LOUISE SPEAR ELEMENTARY SCHOOL
PROJECTED ENROLLMENT

=====

GRADE	2021	2022	2023	2024	2025	2026	2027	2028	2029	2030	2031
	Actual										
PRE-KINDERGARTEN	25	36	36	36	36	36	36	36	36	36	36
KINDERGARTEN	43	55	67	66	55	52	53	52	51	51	50
FIRST	51	41	53	64	63	53	50	51	50	49	49
SECOND	57	55	44	57	69	68	57	54	55	54	53
THIRD	62	58	55	44	58	70	69	58	54	55	54
FOURTH	60	63	59	56	44	59	71	70	59	55	56
FIFTH	66	61	64	60	57	45	60	73	71	60	56
SEVENTH	2										
UNGRADED	5	5	5	4	4	4	4	4	4	4	4
TOTAL K - 5	346	338	347	351	350	351	364	362	344	328	322
% CHANGE		-2.3%	2.7%	1.2%	-0.3%	0.3%	3.7%	-0.5%	-5.0%	-4.7%	-1.8%
TOTAL w/ PK	371	374	383	387	386	387	400	398	380	364	358

Note: As per the district, beginning 2022, PK program is anticipated to be of 2 full-day sections (36 students max). Each section is capped at 18 students.

EDNA LOUISE SPEAR ELEMENTARY SCHOOL
PROJECTED ENROLLMENT - SECTIONAL ANALYSIS

based on maximum class sizes of 20 for K - Grade 3, and 22 for Grades 4 - 5

GRADE	2021	2022	2023	2024	2025	2026	2027	2028	2029	2030	2031
	Actual										
PRE-KINDERGARTEN (18)	25	36	36	36	36	36	36	36	36	36	36
# of Sections	2	2	2	2	2	2	2	2	2	2	2
Avg Section Size	12.5	18.0	18.0	18.0	18.0	18.0	18.0	18.0	18.0	18.0	18.0
KINDERGARTEN (20)	43	55	67	66	55	52	53	52	51	51	50
# of Sections	3	3	4	4	3	3	3	3	3	3	3
Avg Section Size	14.3	18.3	16.8	16.5	18.3	17.3	17.7	17.3	17.0	17.0	16.7
FIRST (20)	51	41	53	64	63	53	50	51	50	49	49
# of Sections	3	3	3	4	4	3	3	3	3	3	3
Avg Section Size	17.0	13.7	17.7	16.0	15.8	17.7	16.7	17.0	16.7	16.3	16.3
SECOND (20)	57	55	44	57	69	68	57	54	55	54	53
# of Sections	3	3	3	3	4	4	3	3	3	3	3
Avg Section Size	19.0	18.3	14.7	19.0	17.3	17.0	19.0	18.0	18.3	18.0	17.7
THIRD (20)	62	58	55	44	58	70	69	58	54	55	54
# of Sections	3	3	3	3	3	4	4	3	3	3	3
Avg Section Size	20.7	19.3	18.3	14.7	19.3	17.5	17.3	19.3	18.0	18.3	18.0
FOURTH (22)	60	63	59	56	44	59	71	70	59	55	56
# of Sections	3	3	3	3	2	3	4	4	3	3	3
Avg Section Size	20.0	21.0	19.7	18.7	22.0	19.7	17.8	17.5	19.7	18.3	18.7
FIFTH (22)	66	61	64	60	57	45	60	73	71	60	56
# of Sections	4	3	3	3	3	3	3	4	4	3	3
Avg Section Size	16.5	20.3	21.3	20.0	19.0	15.0	20.0	18.3	17.8	20.0	18.7
GRADED SC SPED (K-5)	in grade level count										
SEVENTH	2										
UNGRADED	5	5	5	4	4	4	4	4	4	4	4
# of Sections	2	2	2	2	2	2	2	2	2	2	2
Total Enrollment w/o PK	346	338	347	351	350	351	364	362	344	328	322
Total Sections w/o PK	21	20	21	22	21	22	22	22	21	20	20
Avg Section Size	17.9	18.5	18.1	17.5	18.6	17.4	18.1	17.9	17.9	18.0	17.7
Total Enrollment w/PK	371	374	383	387	386	387	400	398	380	364	358
Total Sections w/PK	23	22	23	24	23	24	24	24	23	22	22

Note: PK is half-day in 2021. Beginning 2022, PK will be of 2 full-day sections with 18 students capped for each section.

Note: Graded SC SPED students are included in grade level counts. As a result, the actual average class sizes may be lower than shown.

Note: The boxed cells indicate the average section size is approaching the maximum class size for the grade level.

=====

PORT JEFFERSON MIDDLE SCHOOL
HISTORICAL ENROLLMENT

=====

GRADE	2011	2012	2013	2014	2015	2016	2017	2018	2019	2020	2021
SIXTH	91	104	88	99	73	83	81	86	79	78	74
SEVENTH	107	90	103	87	99	78	83	88	87	80	74
EIGHTH	81	110	90	100	85	104	80	83	90	82	79
UNGRADED	1	3	0	3	2	0	2	1	2	1	2
TOTAL	280	307	281	289	259	265	246	258	258	241	229
% CHANGE		9.6%	-8.5%	2.8%	-10.4%	2.3%	-7.2%	4.9%	0.0%	-6.6%	-5.0%

=====

Note: 2011-2019 data: finalized BEDS posted by NYSED; 2020 & 2021: BEDS in the SIRS 313 forms provided by the district with revisions in the elementary grades for both yrs

=====

Middle School Migration	11 - 12	12 - 13	13 - 14	14 - 15	15 - 16	16 - 17	17 - 18	18 - 19	19 - 20	20 - 21	AVERAGE
6 - 7	98.9%	99.0%	98.9%	100.0%	106.8%	100.0%	108.6%	101.2%	101.3%	94.9%	101.2%
7 - 8	102.8%	100.0%	97.1%	97.7%	105.1%	102.6%	100.0%	102.3%	94.3%	98.8%	100.9%

=====

PORT JEFFERSON MIDDLE SCHOOL
PROJECTED ENROLLMENT

=====

GRADE	2021	2022	2023	2024	2025	2026	2027	2028	2029	2030	2031
	Actual										
SIXTH	74	67	62	65	61	58	46	61	74	72	61
SEVENTH	74	75	68	63	66	62	59	47	62	75	73
EIGHTH	79	77	76	69	64	67	63	60	47	63	76
UNGRADED	2	1	1	1	1	1	1	1	1	1	1
TOTAL	229	220	207	198	192	188	169	169	184	211	211
% CHANGE		-3.9%	-5.9%	-4.3%	-3.0%	-2.1%	-10.1%	0.0%	8.9%	14.7%	0.0%

=====

EARL L. VANDERMEULEN HIGH SCHOOL
HISTORICAL ENROLLMENT

GRADE	2011	2012	2013	2014	2015	2016	2017	2018	2019	2020	2021
NINTH	108	78	106	86	94	87	109	85	79	88	85
TENTH	102	101	80	100	85	90	87	110	83	75	90
ELEVENTH	89	102	101	79	100	88	93	85	108	77	75
TWELFTH	101	90	97	105	79	98	89	96	83	109	79
UNGRADED	1	1	5	2	2	5	5	5	4	4	4
TOTAL	401	372	389	372	360	368	383	381	357	353	333
% CHANGE		-7.2%	4.6%	-4.4%	-3.2%	2.2%	4.1%	-0.5%	-6.3%	-1.1%	-5.7%

Note: 2011-2019 data: finalized BEDS posted by NYSED; 2020 & 2021: BEDS in the SIRS 313 forms provided by the district with revisions in the elementary grades for both yrs

High School Migration	11 - 12	12 - 13	13 - 14	14 - 15	15 - 16	16 - 17	17 - 18	18 - 19	19 - 20	20 - 21	AVERAGE
9 - 10	93.5%	102.6%	94.3%	98.8%	95.7%	100.0%	100.9%	97.6%	94.9%	102.3%	98.9%
10 - 11	100.0%	100.0%	98.8%	100.0%	103.5%	103.3%	97.7%	98.2%	92.8%	100.0%	98.4%
11 - 12	101.1%	95.1%	104.0%	100.0%	98.0%	101.1%	103.2%	97.6%	100.9%	102.6%	101.1%

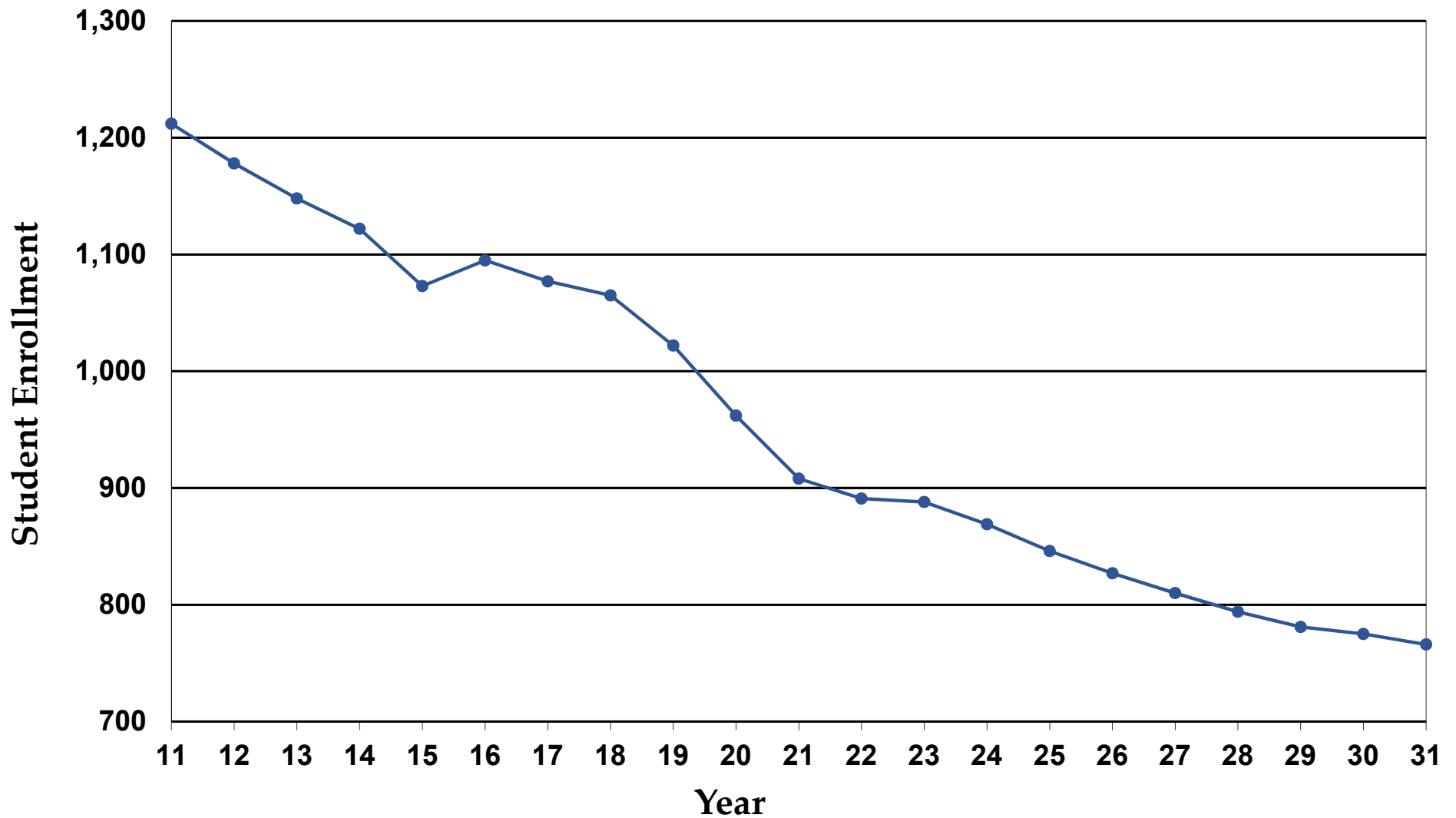
EARL L. VANDERMEULEN HIGH SCHOOL
PROJECTED ENROLLMENT

GRADE	2021	2022	2023	2024	2025	2026	2027	2028	2029	2030	2031
	Actual										
NINTH	85	80	78	77	69	64	67	63	60	47	63
TENTH	90	84	79	77	76	68	63	66	62	59	47
ELEVENTH	75	89	83	78	76	75	67	62	65	61	58
TWELFTH	79	76	90	84	79	77	76	68	63	66	62
UNGRADED	4	4	4	4	4	4	4	4	3	3	3
TOTAL	333	333	334	320	304	288	277	263	253	236	233
% CHANGE		0.0%	0.3%	-4.2%	-5.0%	-5.3%	-3.8%	-5.1%	-3.8%	-6.7%	-1.3%

Appendix B

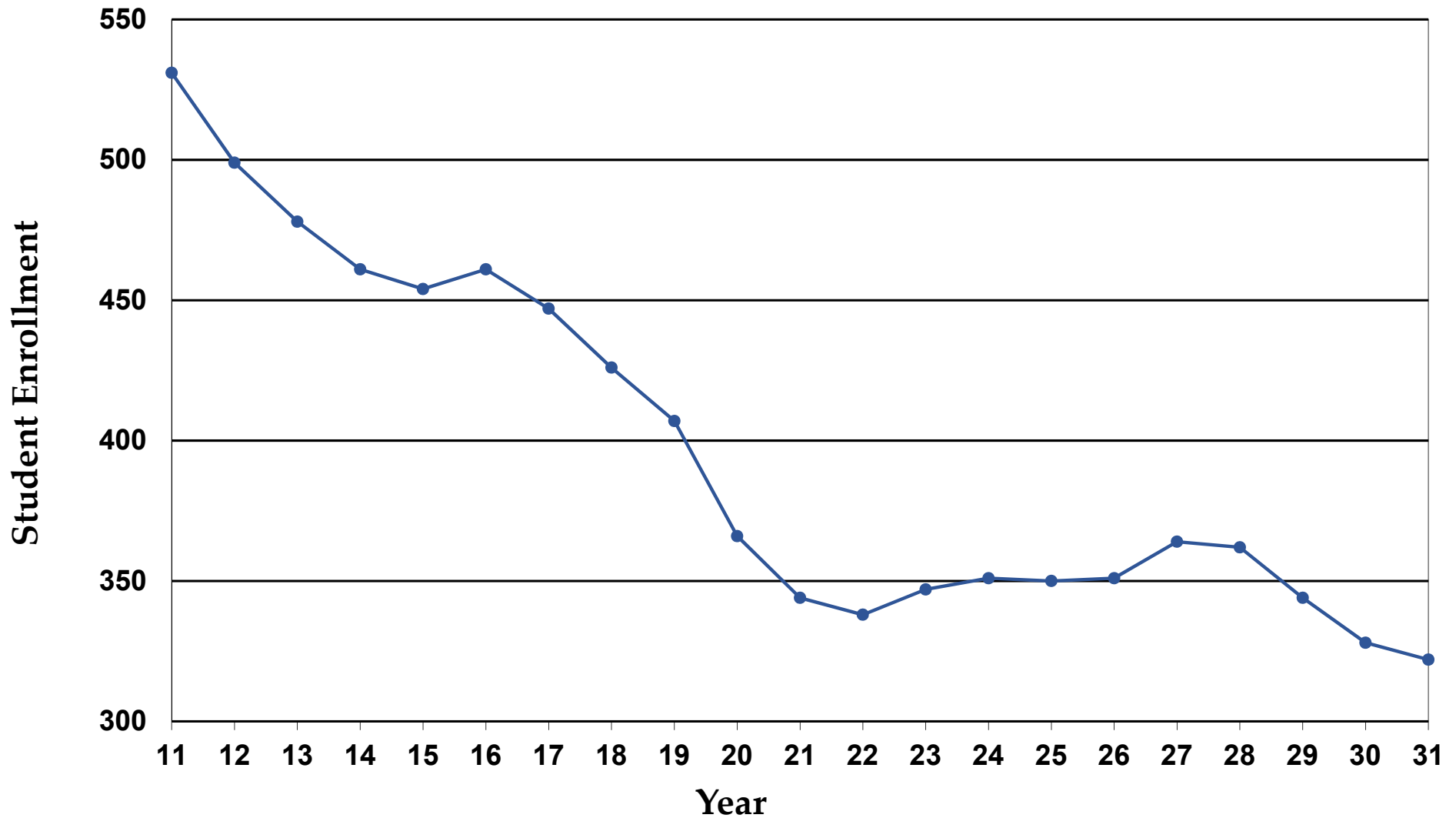
Port Jefferson Union Free School District

Enrollment: Grades K - 12



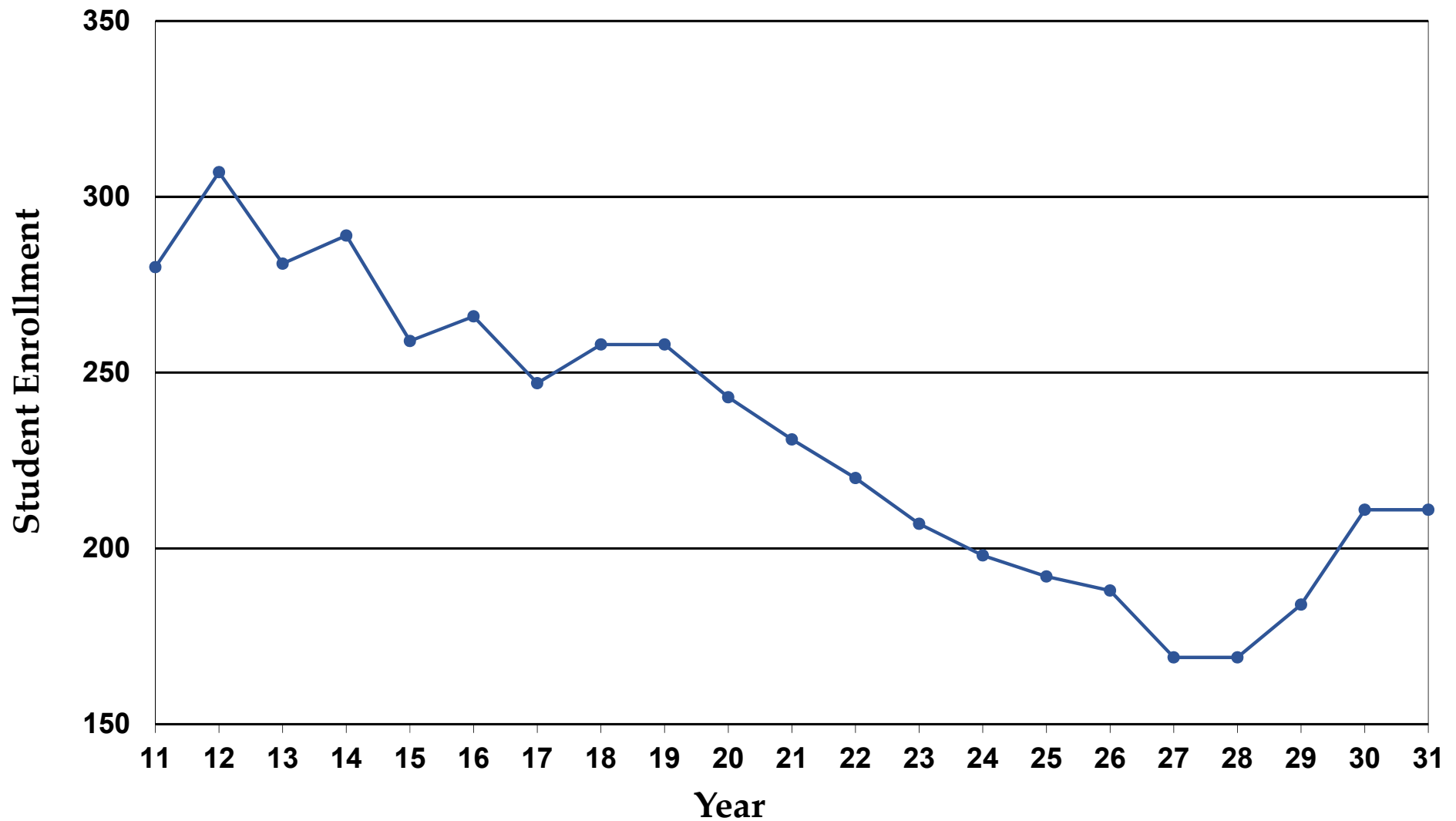
Port Jefferson Union Free School District

Enrollment: Grades K - 5



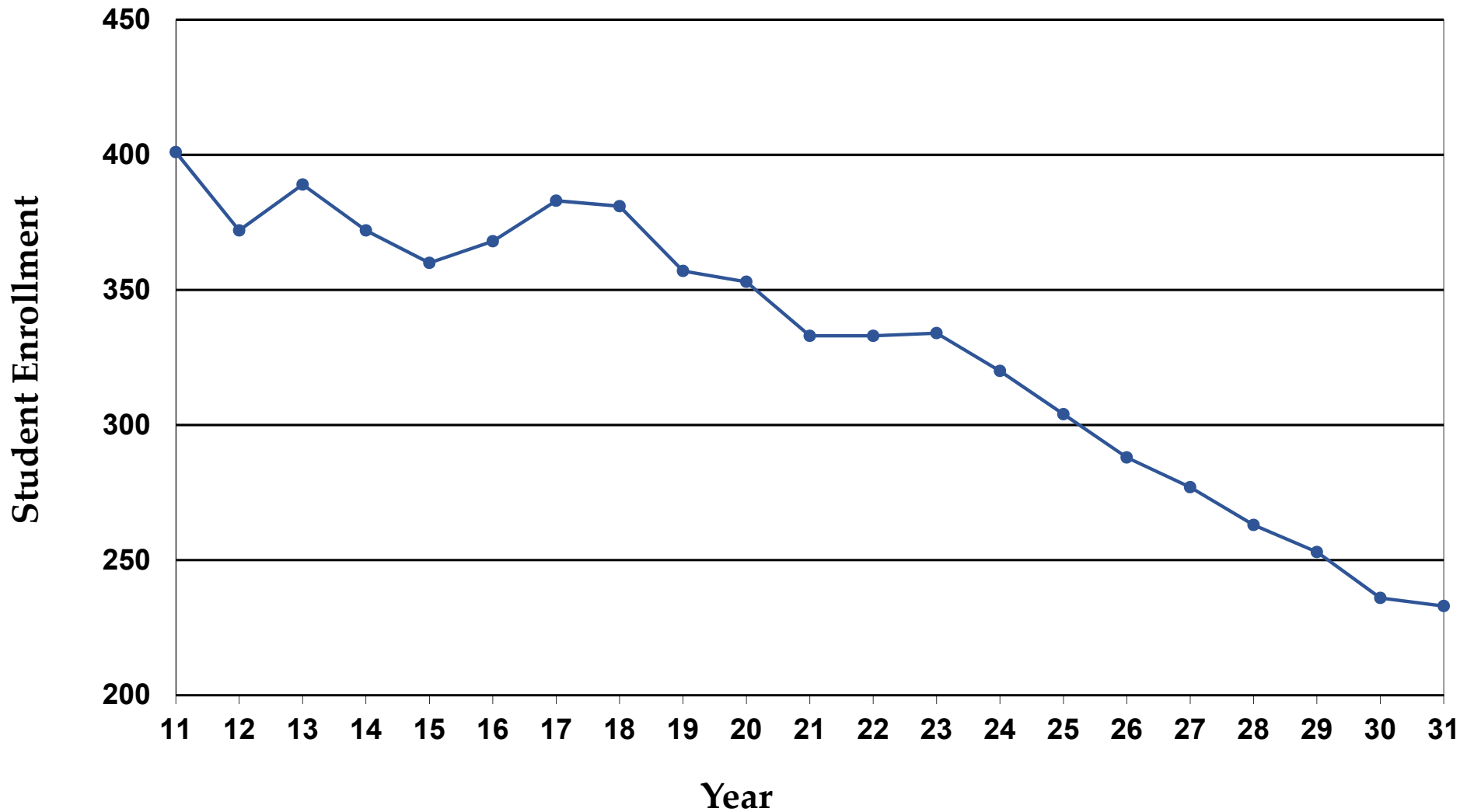
Port Jefferson Union Free School District

Enrollment: Grades 6 - 8



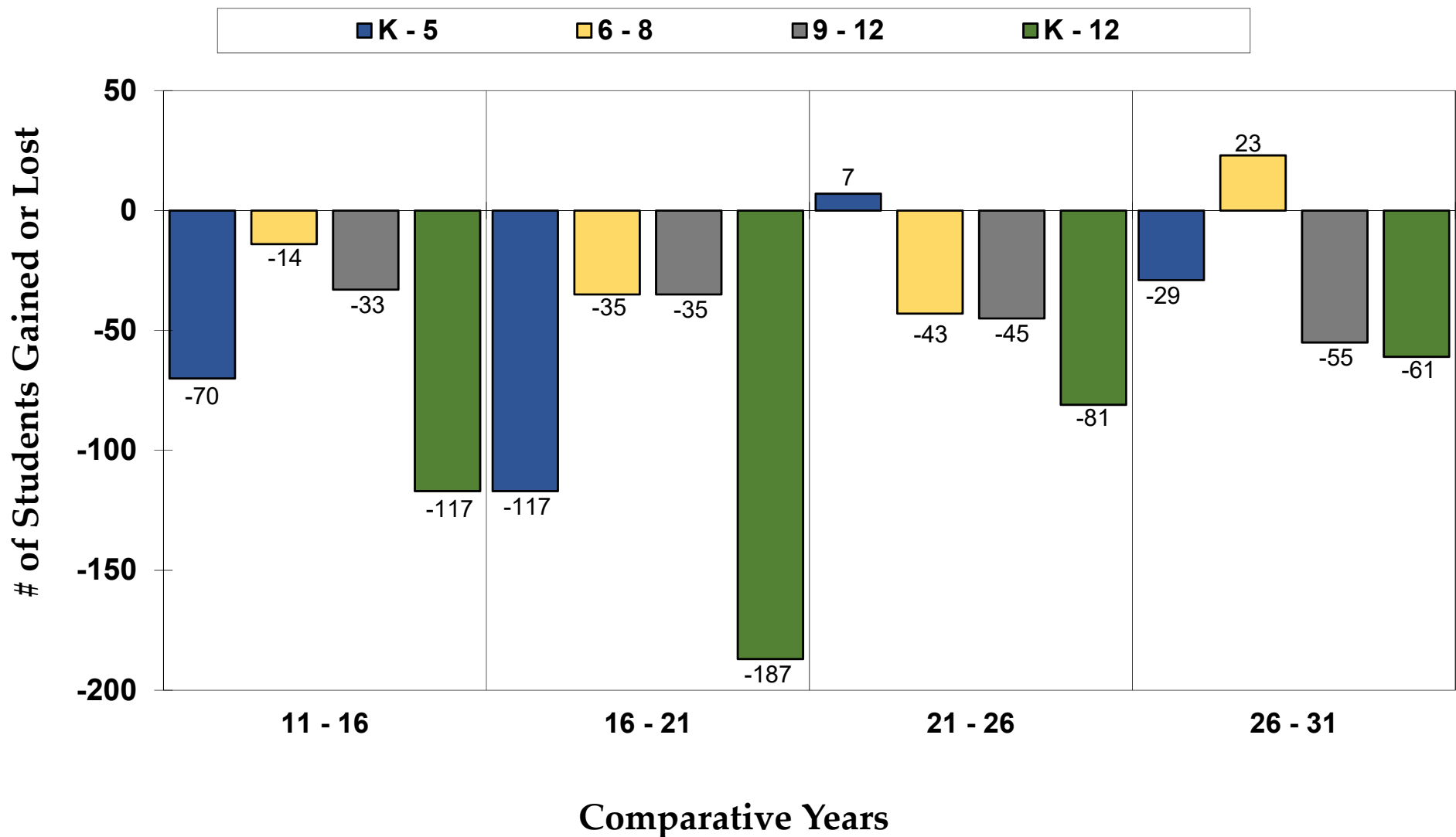
Port Jefferson Union Free School District

Enrollment: Grades 9 - 12



Port Jefferson Union Free School District

Enrollment Change 2011 - 2031



Ms. Jeanette Santos, President
Ms. Ilene Herz, Esq., Vice President
Ms. Mary Ellen Cunningham
Mr. James Kaden
Mr. Brian J. Sales
Mr. Peter Wunsch
Ms. Maryann Zumpano
Ms. Joanne Klein, District Clerk

Mr. Michael Flynn
Chief Operating Officer
Ms. Angelique Johnson-Dingle
District Superintendent





Division of Instructional Support Services

Office of School Planning & Research
31 Lee Avenue
Wheatley Heights, NY 11798
631-595-6802